

## LED Inset Taxiway Edge Light

### Compliances:

- ICAO: Annex 14 - Volume I
- FAA: L-852T AC150/ 5345-46 (Current Edition) and "Engineering Brief No.67"
- IEC: TS 61827
- NATO: STANAG 3316

### Manuals:

- Instruction manual **UT-MT-0606**

### Performances and benefits:

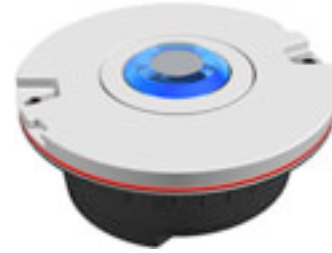
- 6mm protrusion: FAA Style 3 and IEC Style 4 to prevent the fixture is damaged by the transit of aircrafts/vehicles and to make the snow removal operation easy.
- Thanks to the long life of the LEDs (60,000 hours at the top brightness step or far over 100,000 hours in normal operating conditions) the maintenance activities are extremely reduced and the safety of the airport operations is considerably increased.
- The LED emission directly ensures the correct colour. Absence of coloured filters ensures no energy losses and no colour shifts when viewed at various angles or under temperature/current variations.
- The compatibility with the existing typical AFL series circuits is complete. There is no need to replace CCRs, transformers and cables. The electronics inside makes the light output variable like a traditional halogen lamp, as indicated by the FAA "Engineering Brief No.67".
- The lights are provided with a surge protection device, as required by the FAA "Engineering Brief No.67".
- Immediate detection of an internal fault (less than 300 msec).
- The possibility of installation on existing bases gives the chance of a progressive replacement of the existing lights.
- A new installation with LED lights means lower loads and therefore low-sized CCRs and transformers, thus allowing significant savings on installation and management.

### Features:

- Aluminium treated drop-forged dome and cast aluminium lower cover.
- Omnidirectional, 12" dia.
- The lens is mechanically clamped to the dome by means of a lens holder; a customized lens gasket avoids the use of sealing. Replacement is quick and easy.
- Fixture energy consumption: typically **6 VA**. Arctic kit consumption: less than 40 VA for the 12" dia. light.
- No optical adjustment is required after the replacement of LED or lens.
- An O-ring placed outside around the dome avoids dirt deposits between light unit and mounting assembly.
- The removal of the fixture is easy thanks to the two seats provided on the dome.

### Luminous Source:

- One blue LED.
- Dedicated optics to collect the LED luminous flux and maximize the light output.



### How To Order:

**LTO12 02 - I - 2 - 5 - B - 0 - 00**

#### Basic P/N:

12 = 12" Light Fixture

#### Version:

**Compliance:**  
 I = ICAO - IEC  
 S = STANAG  
 F = FAA

#### Bolt Circle Diameter:

7 = Suitable for 12" L-867B Deep Base  
 8 = Suitable for 12" Shallow Base and 12" L-868B Deep Base

#### Mode:

5 = 2.8-6.6A Power Supply

#### Mounting Assembly:

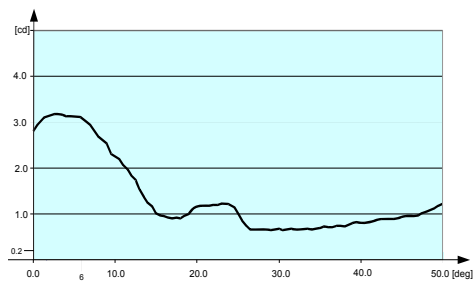
B = L-868 Base or Shallow Base 12"  
 O = No Mounting Assembly

#### Arctic kit:

0 = without arctic kit  
 1 = with arctic kit

#### Monitoring:

01 = with monitoring  
 02 = without monitoring



Photometric distribution

### Electronics:

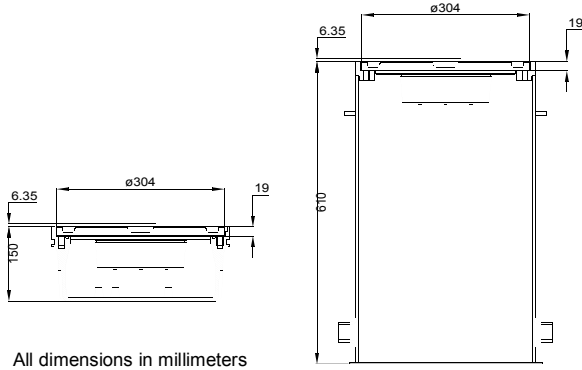
- Strong-built, highly resistant to shock and vibration.
- Light output variable like a traditional halogen lamp, as indicated by the FAA "Engineering Brief No.67".
- Patent pending for current/voltage conversion circuit.

### Power Supply:

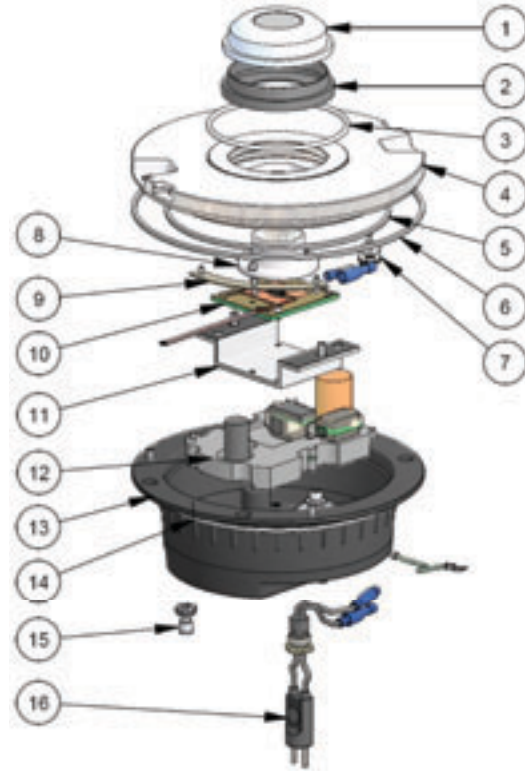
- From 10/15W up to 300W series transformer.

**Base:**

- Cast aluminium shallow base, 8" or 12" dia. (mounting assembly B), with two or six threaded holes respectively, for fastening the light unit. The base is equipped with one cable lead, consisting of two single-pole leads, with FAA L-823 receptacle. Special bases without cable leads can be supplied on request with suitable holes for conduit connections.
- The light unit can be directly mounted on a deep base, L-868 or L-867 type, size B.



**LTO - Typical installation**



**Accessories:**

[P/N]	Description
315.1228	Base L-867, Class IA, Size B, 24" Deep
315.1230	Base L-868, Class IA, Size B, 24" Deep*
315.1420	Flange ring with pavement dam for L-868 base, Size B, with O-Ring and bolts
152.8110	Shallow base 12" dia., one cable lead, with gasket and hardware
152.6116	Adaptor Ring 8"-12" complete with hardware
712.1012	Setting material for shallow base, 5 lt
712.1013	Setting material for shallow base, 20 lt
332.4301	Positioning jig for 8"-12" shallow base without optical device
332.4140	Lifting tool (2 pieces to work properly)

\* Sectional bases may be required depending upon the paving technique

Shipping Weights and Volumes	
	Light Unit
Weight (kg)	5.7
Volume (m <sup>3</sup> )	0.022

**Renewal Parts for light unit:**

[N°]	Description	[P/N]
1	Omnidirectional Lens	317.4231
2	Lens gasket	325.0327
3	O-Ring for lens holder	758.2041
4	8" or 12" dome, for L-867 or L-868 base, with or w/out arctic kit, complete with lens and gaskets	(*)
5	O-Ring for lower cover	758.2120
6	O-Ring for 8" or 12" dome	(*)
7	Arctic kit thermostat	152.5500
8	Reflector with hardware	152.5560
9	Arctic kit heaters	(*)
10	Luminous Source with accessories	152.5540
11	Luminous Source support with hardware	152.5545
12	Electronics	(*)
13	Lower cover with 1 entry, complete with plug and valve	152.5550
14	O-Ring for base (for light unit 8" dia.)	758.2008
15	Valve for watertightness test	786.7045
16	FAA L-823 plug	152.6147

(\*) Refer to the manual UT-MT-0606 for a complete list of the available spare parts.